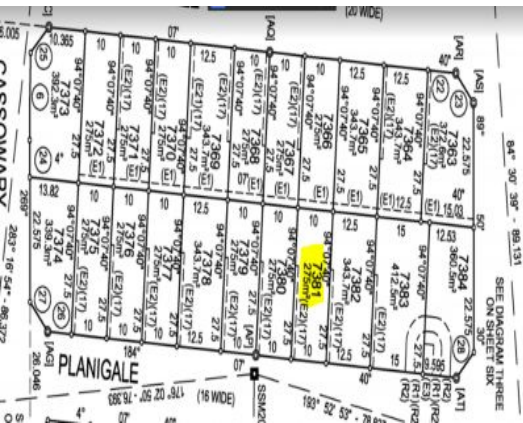


15 Planigale Street Marsden Park, NSW



**NOTE:** Lot areas, dimensions & easements are approximate only and subject to final build, regulatory approvals & plan registration



**SOLD !!**

Nirvana Estate Agents presents Great opportunity to secure this EAST facing 275sqm registered Land in Newpark Estate of Marsden Park, gives you the potential to build your dream house as per your taste.

- \* Block size 275sqm
- \* 10m frontage
- \* Surrounded by parklands.
- \* Short drive to Business park featuring COSTCO, IKEA, BUNNINGS, ALDI , JB Hi-Fi , LINDT FACTORY OUTLET & MANY MORE STORES,
- \* Close to two schools, a shopping centre, sporting ovals and a community hub.

For more information Connect to Kulwinder on



**Kulwinder Singh**

0430 444 216

**Satya Ranyal**

0401 096 284